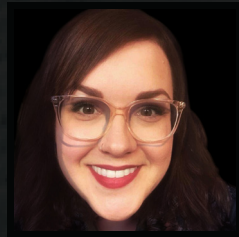


# CAST



**BRADLEY AMESSE**  
ENSEMBLE



**MEG BUCHANAN-LUNN**  
ENSEMBLE



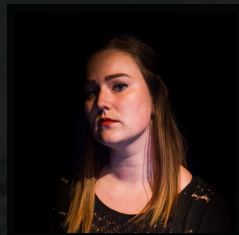
**MATT BUTLER**  
ADOLFO PIRELLI



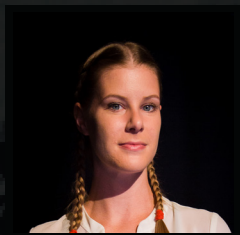
**BLAKE CAREY**  
TOBIAS RAGG



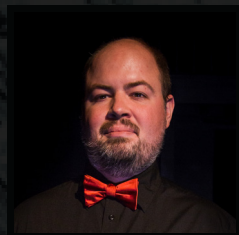
**MATT DEKORT**  
ENSEMBLE



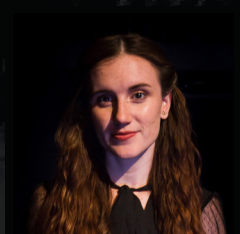
**KATE DEMAN**  
ENSEMBLE



**HANNAN ELIAS**  
ENSEMBLE



**JEREMY HEWITSON**  
ENSEMBLE

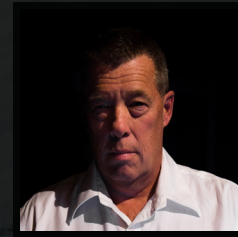


**JESSLYN HODGSON**  
ENSEMBLE

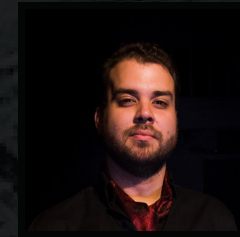


**PATRICK HOFFER**  
JUDGE TURPIN

# CAST



**JEFF HOLBROUGH**  
SWEENEY TODD



**BEN KENNES**  
BEADLE BAMFORD



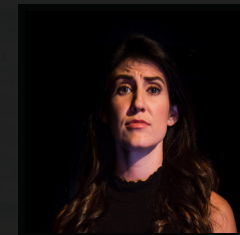
**NICOLA KLEIN**  
JOHANNA



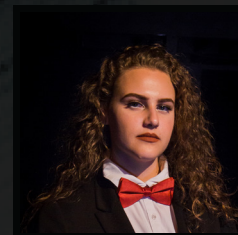
**AJ MACDONALD**  
ANTHONY HOPE



**MELISSA METLER**  
MRS. LOVETT



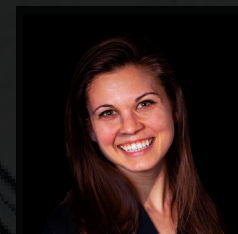
**RAVEN MULLAN**  
ENSEMBLE



**SIMMIE PATOKA**  
ENSEMBLE



**DYLAN ROCK**  
ENSEMBLE



**JACLYN SIEGEL**  
BEGGAR WOMAN



**HENRY TRUONG**  
ENSEMBLE



# ORCHESTRA

## CONDUCTOR

Sponsored by Jenn Floris  
**BEN LEIBOVITZ**

## BASSOON

Sponsored By Sue Garner  
**EMMA BILGER**

## VIOLIN

Sponsored By the Langford Clarks  
**ADRIANNA LEE**

## KEYBOARD

Sponsored By Dr Kyle Gervais &  
Dustin Delegrade  
**WILLIAM LI**

## BASS

Sponsored By James Gruenbauer  
**CHRISTOPHER NEWTON**

## HORN

**DYLON PASTOOR**

## TRUMPET

**LUCA PEVERONI**

## CLARINET

**SAMMY JOHNSTON**

## PERCUSSION

Sponsored By James Gruenbauer  
**MARK SWAN**

## CELLO

Sponsored By Unwrapped Marketplace  
**GRACE WIEBE**

## MUSIC PREPARATION

**RAE CUNNINGHAM**

**SWEENEY TODD** is co-produced with Allswell Productions  
and Musical Theatre Productions

Allswell Productions was formed by Christine Gruenbauer,  
Hailey Hill, and Ben Leibovitz in 2016. The following  
September, the team staged their inaugural production  
with Pasek and Paul's **DOGFIGHT** at the Wolf Performance  
Hall. This production went on to win three local Brick-  
enden awards for "Outstanding Lighting," "Outstanding  
Direction," and "Outstanding Musical." You can find more  
information about Allswell Productions at  
[allswelltheatre.com](http://allswelltheatre.com)

**ALLSWELL  
PRODUCTIONS**

There will be a 15 minute intermission  
No photography of record of the production is permitted  
**WARNING:** Fog effects, gunshot sound effects, disturbing content

# CREATIVE TEAM



**HAILEY HILL**  
DIRECTOR



**CHRISTINE GRUENBAUER**  
PRODUCER



**BEN LEIBOVITZ**  
MUSIC DIRECTOR



**CASSANDRA DI FELICE**  
CHOREOGRAPHER

**COSTUME DESIGN**  
ELONA THIELAN

**SOUND DESIGN**  
SAM RASKAS

**PROPS DESIGN**  
BARBARA RAND

**PROPS CONSTRUCTION**  
NIMALKA WEERASURIYA

**STAGE MANAGER**  
REGINE LI

**ASSISTANT STAGE MANAGER**  
LEAN CARTAN

**STAGE HANDS**  
MITCHELL BLOMMESTYN  
LAUREN NICOLAAS  
DEANA SIGUT

**VISUAL COMMUNICATIONS**  
SARAH McNEIL

**LIGHTING DESIGN**  
STEVE ALLEN

**SET DESIGN**  
JOE RECCHIA



**SET CONSTRUCTION**  
JIM BROWN  
DAVE DOMAN  
NORMAN ELIGH  
BOB GEROW  
GORD HARDCASTLE  
FRED HASLER  
STEPHEN MITCHELL  
JOE OWENS  
RICHARD SKIDMORE  
TOM SMYTH

**HEAD SCENIC PAINTERS**  
LAURA SEPULVEDA  
VANESSA TREPANIER





Acting ♦ Dance ♦ Music ♦ Stage Combat ~ Direction ♦ Instruction ♦ Performance

We work with professional & amateur companies, bringing theatre skills to a higher level. Contact us for monologue coaching, movement & dance choreography, vocal lessons, and fight direction. We also have an extensive collection of weapons available for rent, including swords and firearms.  
(519) 457-8802 [www.shrewdbusiness.com](http://www.shrewdbusiness.com)  

MARCH 27-APRIL 5  
McMANUS STAGE — THE GRAND THEATRE

# JOSEPH AND THE AMAZING TECHNICOLOR DREAMCOAT

LYRICS BY  
TIM RICE      MUSIC BY  
ANDREW LLOYD WEBBER



SUBSCRIPTION  
3 SHOWS &  
3-COURSE DINNER  
**\$99**

# SOMETHING WICKED

A VILLAINESS REVUE

JUNE 24-27  
THE WAVE ~ WESTERN UNIVERSITY

A DELICIOUSLY DARK EVENING  
OF DINNER, MUSIC, AND MISCHIEF...

Musical  
Theatre  
Productions

UPGRADE TO A SUBSCRIPTION TODAY!  
[MTPLONDON.CA](http://MTPLONDON.CA) or 519-672-8800

CITI♦PLAZA  
corporate imaging  
print centre

*Scooter Productions presents*

## Doubt, A Parable

by John Patrick Shanley

March 19, 20, 21, 26, 27, 28,  
2020

TAP Centre for Creativity

# SPECIAL THANKS:

ANDREW RETHAZI

OWEN JONES

BRITT DUNCAN, KAREN KILLEEN,  
LAUREN REBELO &  
THE GRAND THEATRE

PHIL HALLMAN

ROB KLEIN

COBBLETOG ANTIQUE MARKET

ROB RICHARDSON AND  
STAGE WIRELESS

FIONA DOUGLAS & ROYAL CITY  
MUSICAL PRODUCTIONS

SHREW'D BUSINESS

LONDON COMMUNITY PLAYERS  
PROPS, SET, FURNITURE &  
COSTUMES DEPARTMENTS

STRATFORD FESTIVAL PROPS  
DEPARTMENT

MELONY MENARD

SUSAN WHITE & JAMES GRUENBAUER

OLAF PLOTZKE

WAYNE REIERSON & THE SHAW  
FESTIVAL PROPS DEPARTMENT

ORIGINAL KIDS THEATRE COMPANY

**THANK YOU TO ALL THE SET PAINTING AND LOAD-IN VOLUNTEERS:**  
ALEC JARRY, CARRIE COOPER, DELANEY CARVALHO, EMILY JOOSTEN, SHONA  
CASSERLY, JORGE VILAREAL, RYAN HOFFER, AL THOMPSON, AND ANDREW DODD

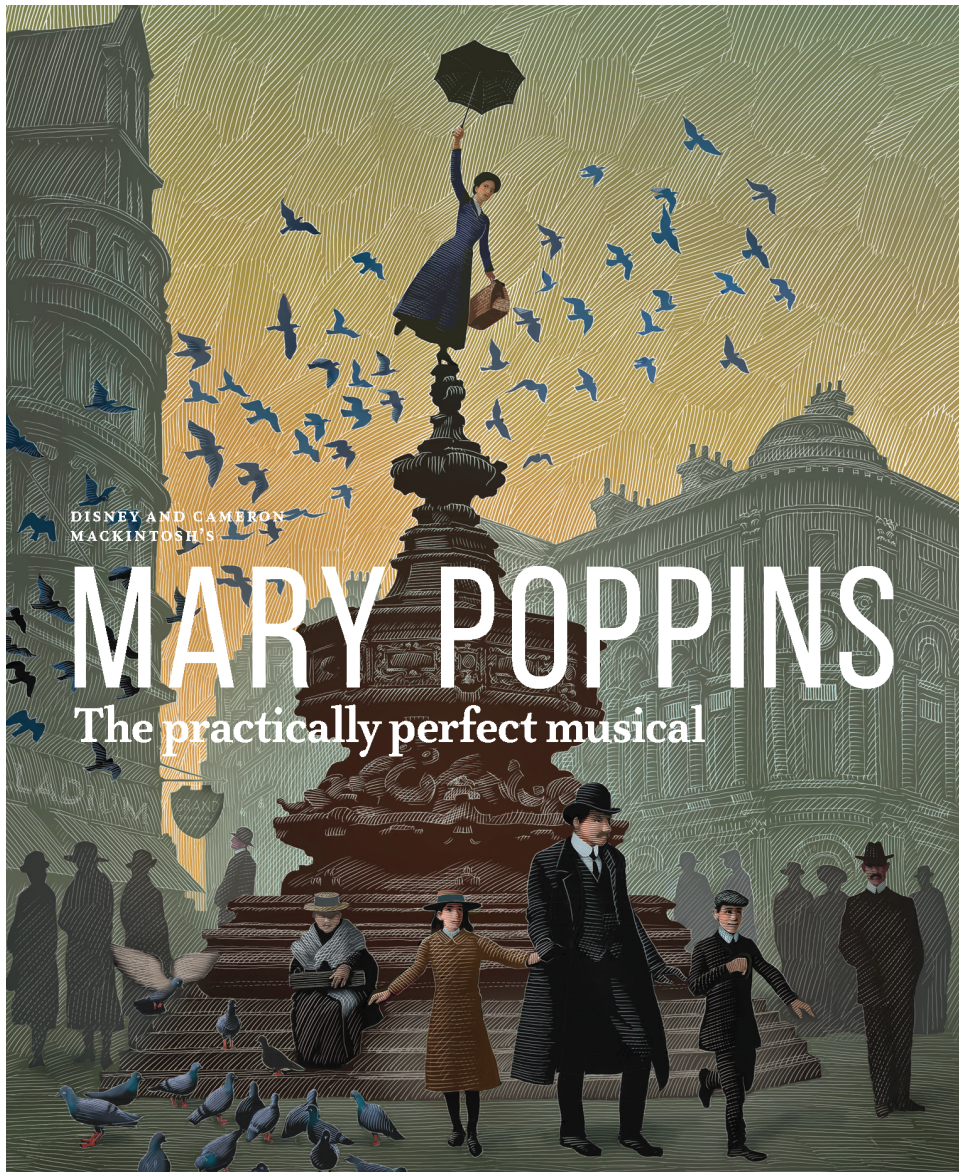


And finally, this production would not have been possible without the immeasurable assistance, cheerleading, love and support from Rae Cunningham. The world is a little darker without our Rae of Sunshine, but we hope this production of their favorite show would make them proud. We miss you, Rae.

**THANK YOU TO OUR SPONSORS**

CITI♦PLAZA  corporate imaging  
print centre





DISNEY AND CAMERON  
MACKINTOSH'S

# MARY POPPINS

The practically perfect musical

**GRAND  
THEATRE**

NOVEMBER 26 TO DECEMBER 29  
SPRIET STAGE

SEASON  
SPONSOR



TITLE  
SPONSOR



Stronger  
Communities  
Together™

GRANDTHEATRE.COM

BOX OFFICE 519.672.8800

MUSICAL THEATRE PRODUCTIONS & ALLSWELL PRODUCTIONS

PRESENT

# SWEENEY TODD

THE DEMON BARBER OF FLEET STREET  
A MUSICAL THRILLER

MUSIC & LYRICS BY  
STEPHEN SONDHEIM

BOOK BY  
HUGH WHEELER

FROM AN ADAPTATION BY  
CHRISTOPHER BOND

NOVEMBER 28 - DECEMBER 7

MCMANUS STAGE • GRAND THEATRE

519-672-8800 • ALLSWELLTHEATRE.CA



Musical  
Theatre  
Productions

**ALLSWELL  
PRODUCTIONS**

**CITIZENPLAZA**

2019 - 2020 SEASON SPONSOR

**corporate imaging  
print centre**

PRINTING PARTNER

SWEENEY TODD IS PRESENTED THROUGH SPECIAL ARRANGEMENT WITH MUSIC THEATRE INTERNATIONAL (MTI)  
ALL AUTHORIZED PERFORMANCE MATERIALS ARE ALSO SUPPLIED BY MTI, 423 WEST 55TH STREET, NEW YORK, NY 10019